



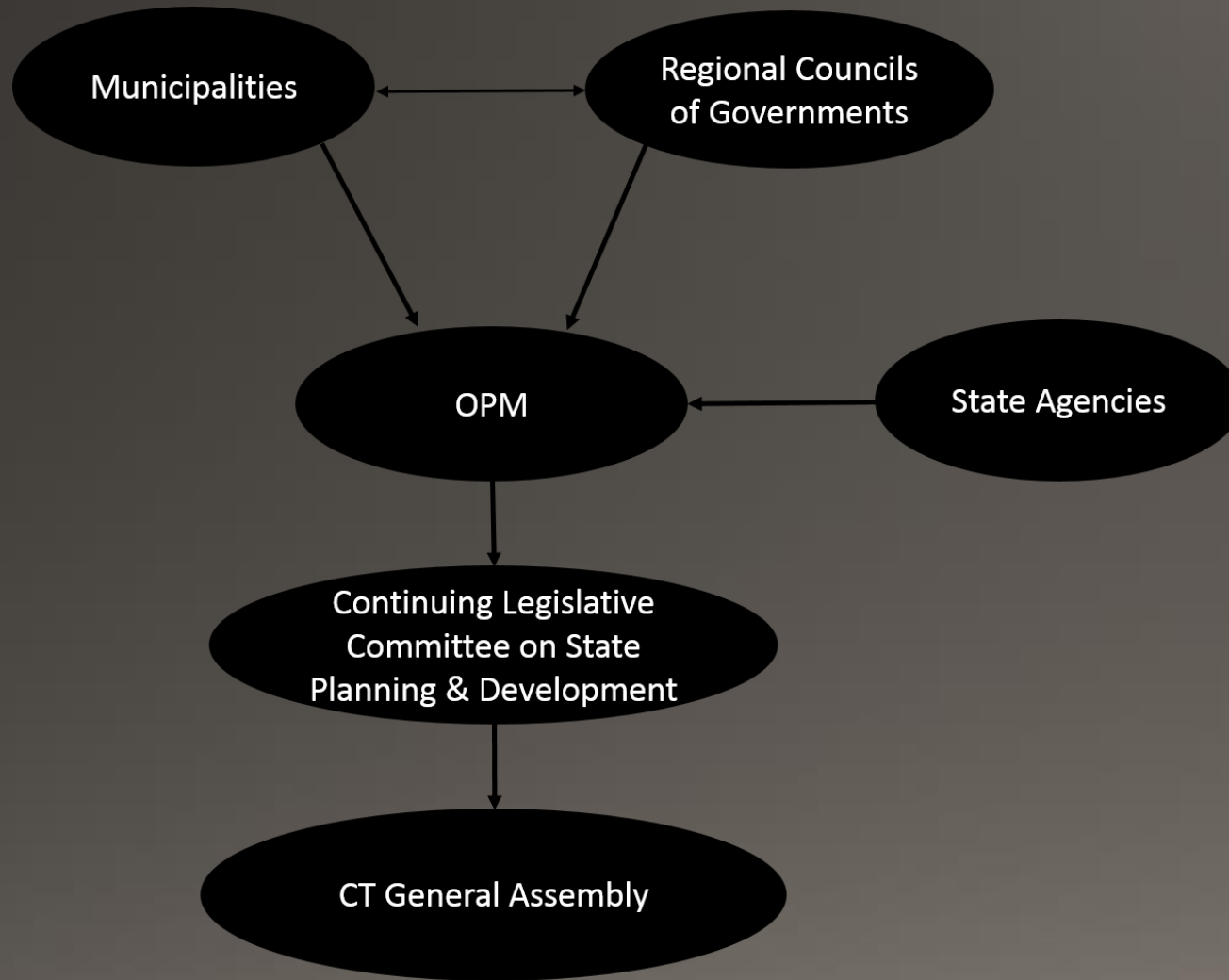
Conservation and Development Policies: The Plan for Connecticut

2018-2023 Revision



March 9, 2020 Public Hearing
Legislative Office Building Room 2100, Hartford, CT

State C&D Plan Revision and Adoption Process



The State C&D Plan is developed by OPM, adopted by the General Assembly, and implemented by state agencies

(CGS Sec. 16a-24 thru Sec. 16a-33)

2018-2023 C&D Plan Revision Timeline

- **September 15, 2016** — OPM submitted an initial draft of the State C&D Plan to the Continuing Legislative Committee on State Planning and Development for a 90-day review. (CGS Sec. 16a-28(a))
- **May 12, 2017** — OPM published a revised draft C&D Plan based on feedback from the Continuing Committee and informal public workshops. (CGS Sec. 16a-28(b))
- **May 12, 2017 – October 16, 2017** — OPM conducts public hearings and solicits comments on the draft C&D Plan. (CGS Sec. 16a-28(c))
- **December 1, 2017** — OPM submits a recommended draft State C&D Plan to the Continuing Committee for consideration. (CGS Sec. 16a-29)
- **2018 Legislative Session** — Continuing Committee holds a public hearing on the draft State C&D Plan, prior to making its own recommendation to the General Assembly for approval or disapproval. (CGS Sec. 16a-30(a))

State C&D Plan Implementation

- CGS Sec. 16a-31(a) requires agencies to be consistent with the C&D Plan whenever they undertake or authorize grants for any of the following actions using more than \$200,000 in state or federal funds:
 - The acquisition of real property
 - The development or improvement of real property
 - The acquisition of public transportation equipment or facilities



DOT maintenance facility under construction in Colchester, CT.
Source: Lawrence Brunoli Inc.

State C&D Plan Implementation (cont.)

- CGS Sec. 16a-31(b) requires agencies to request an advisory statement from OPM commenting on the extent to which any proposed action is in conformity to the C&D Plan
- CGS Sec. 16a-31(c) requires OPM to submit an advisory statement commenting on the extent to which Bond Commission agenda items are in conformity with the C&D Plan
- CGS Sec. 16a-31(e) requires agencies to submit a draft of any plan prepared under state or federal law to OPM for a review of consistency with the C&D Plan

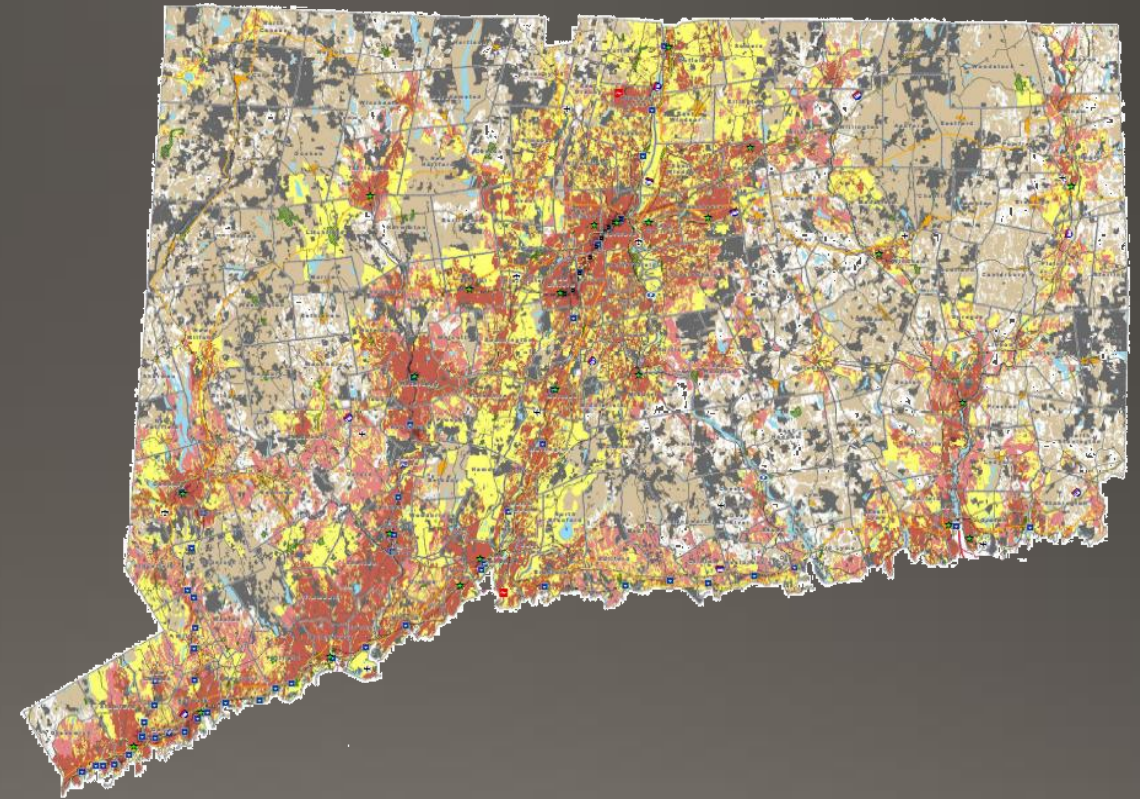
Role of the Locational Guide Map

- State agencies shall not provide funding for certain “growth-related projects”, as defined in CGS 16a-35c, unless such projects are located within a priority funding area
 - *LGM shall not be used by itself to determine consistency with the written policies of the State C&D Plan (see 2013 Continuing Committee endorsement letter)*
- State agencies may provide funding for growth-related project located outside of a PFA following an exception process that is weighted toward consistency with the municipal POCD
 - Ensures local support for projects located outside of PFAs
 - Reduces the need for interim map changes
 - Encourages municipalities to develop robust POCDs

Priority Funding Areas (PFAs) Delineated on the Locational Guide Map (LGM)

(CGS Sec. 16a-35c — 16a-35h)

- State agencies choosing to provide funding for a “growth-related project” located outside a PFA must request an exception from OPM based on the project meeting the following requirements:
 - Determination that such project is consistent with the POCD of the affected municipality(ies); and
 - Determination that such project meets at least one of nine exception criteria listed under CGS Sec. 16a-35d(b)



Revisions to the C&D Plan for 2018-2023

- GMP chapter preambles updated to reflect current trends and conditions
- Out of 67 total policies:
 - 14 revisions (majority in GMP #4 - protection of natural resources)
 - 2 new policies
 - Policy #1.2
 - Policy #4.3
- Improved readability and made technical edits where warranted
- Fresh graphics and visual design

Recommended PFAs for 2018-2023

- Majority of public input requested a stricter approach to delineating priority funding areas (preference toward census blocks containing two or more of the following criteria as opposed to one or more):

PFA Criterion	Source of Data
Designation as an Urban Area or Urban Cluster in 2010 Census	U.S. Census Bureau
Boundaries that intersect a ½ mile buffer surrounding existing or planned mass-transit stations (busway or passenger rail)	Generated by OPM using data from CT DOT
Existing or planned sewer service	DEEP; municipalities; COGs
Existing or planned water service	DPH; municipalities; COGs
Local bus routes when service is provided 7 days a week	CT DOT; local transit authorities; COGs

Priority Funding Areas

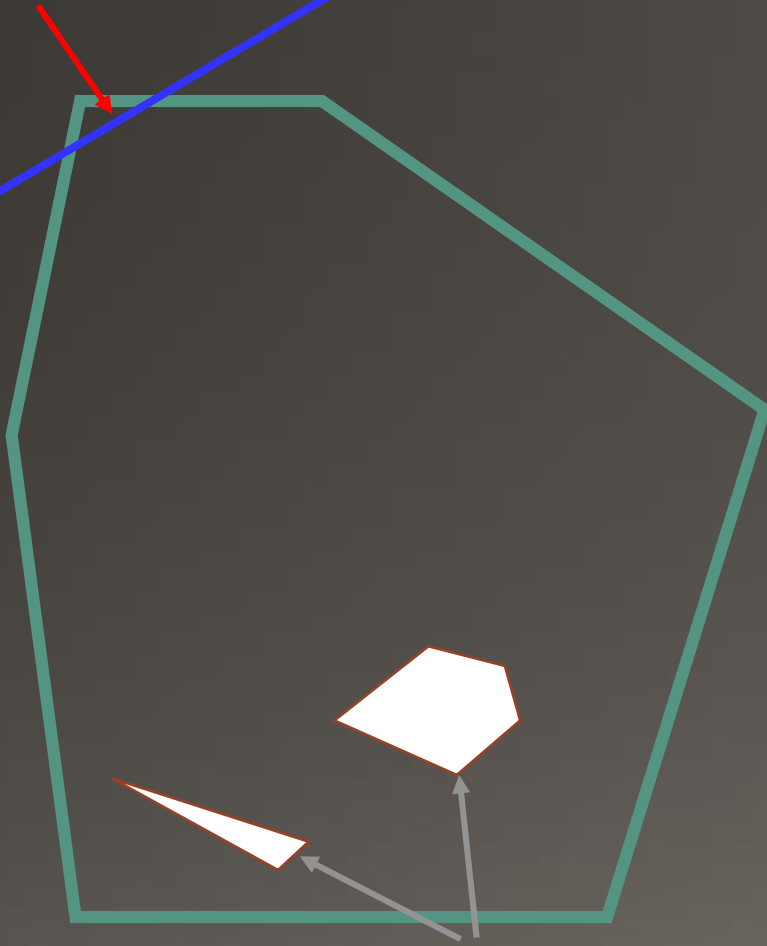


Larger Census
Blocks in less
populated areas

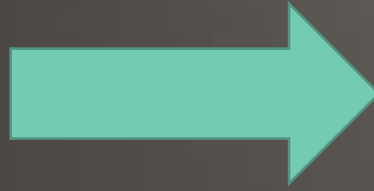
Smaller Census
Blocks in highly
populated areas

Water Service

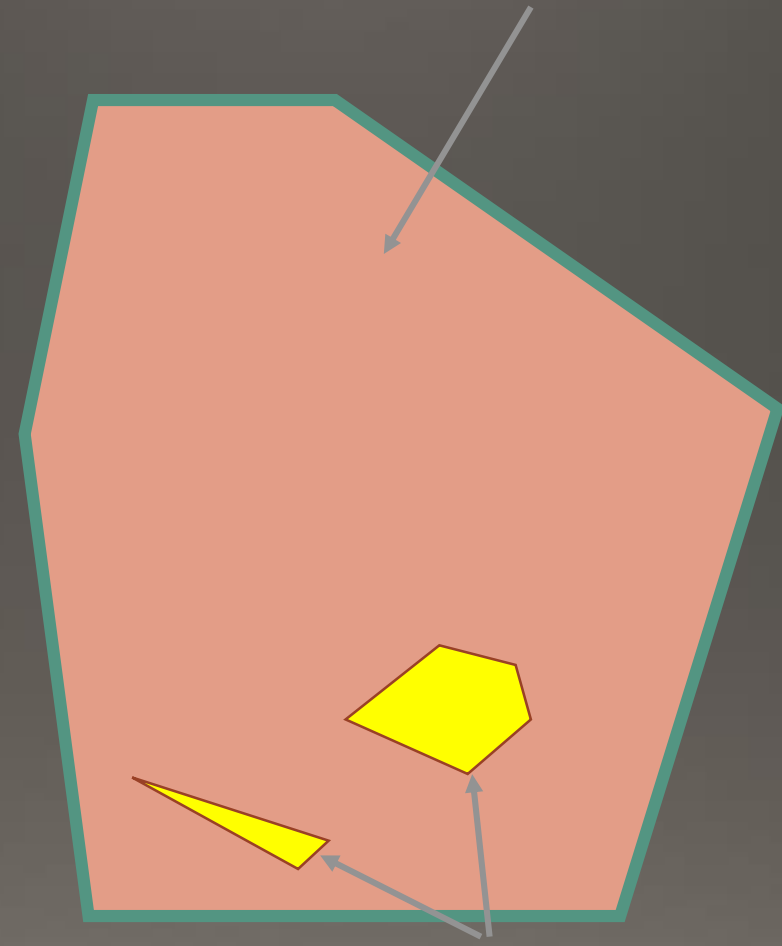
Area passes through one corner of census block:



Prime agricultural soils
(conservation factor)



Results in entire census block being designated as a **Priority Funding Area (PFA)**:



Balanced PFA designation only where conservation factors exist

Application of the LGM for 2018-2023

Priority Funding Areas	Balanced Priority Funding Areas	Village Priority Funding Areas	Conservation Areas	Undesignated Areas
Growth-related projects may proceed without an exception	Growth-related projects may proceed without an exception, if the sponsoring agency documents how it will address any potential policy conflicts after consulting with the appropriate resource consultation agency	Growth-related projects may proceed without an exception, if the sponsoring agency documents how it will help sustain village character	Growth-related projects may proceed with an exception*	Growth-related projects may proceed with an exception*

* Exception process requires a state growth-related project to be consistent with the municipality's POCD

Conservation Factors:

Conservation Factor	Source of Data
Core forest areas greater than 250 acres	UCONN CLEAR Changing Landscape Project
Drinking water supply watersheds	DPH
Aquifer Protection Areas	DEEP
Wetland soils greater than 25 acres	DEEP; DoAg
Undeveloped prime, statewide important, and locally important agricultural soils greater than 25 acres	DoAg; USDA NRCS
Hurricane Inundation Zones	FEMA; CT DESPP
100-year flood zones	FEMA; CT DESPP
Critical wildlife habitats	DEEP
Locally important conservation areas	Municipalities

informationCheck OPM's
website for and updates:

portal.ct.gov/cdplan

OPM Staff:

Dan Morley
Bruce Wittchen
Matt Pafford
Eric Lindquist

